



INSIDE THIS ISSUE

- 1 President's Message
- 2 Nuts & Bolts
- 3 Texas Tour, Swap Meet, FYI
- 4 Officers, Board Members
- 5 Calendar, Cookie List, Club Apparel
- 6 1000 Mile Club, New Member, Spring Tour
- 7 February Breakfast and Poker Run Pix
- 8 Poker Run and February Meeting Pix
- 9 Birthdays, Anniversaries, Sunshine Report
- 10 Technical Info
- 11 About the Model A Club

visit us on the web at www.tulsamodelafordclub.com



THE RUMBLE SHEET

MARCH 2016 – VOLUME 50 – ISSUE 3

Jerry's Thoughts



Someone asked me the other day about how they could resolve a mechanical problem they were having with their 'A'. They were skeptical about driving it but also just as skeptical about not driving it. I remember those days well and through our wonderful club I found tips, answers, and help at my fingertips.

Friendly members of our club eventually solved what I thought were insurmountable problems for a new member owning a Model A.

No matter what your mechanical capabilities or the condition your car is in, friendly help and knowledgeable advice are right under your nose. This not is only about a car running well, but is also about safety and potential problems not yet recognizable.

I've been thinking about a technical session or two we can put together to resolve some of these issues for ALL of our members.

Please contact me or any board member and if enough interest is generated we can make this happen.

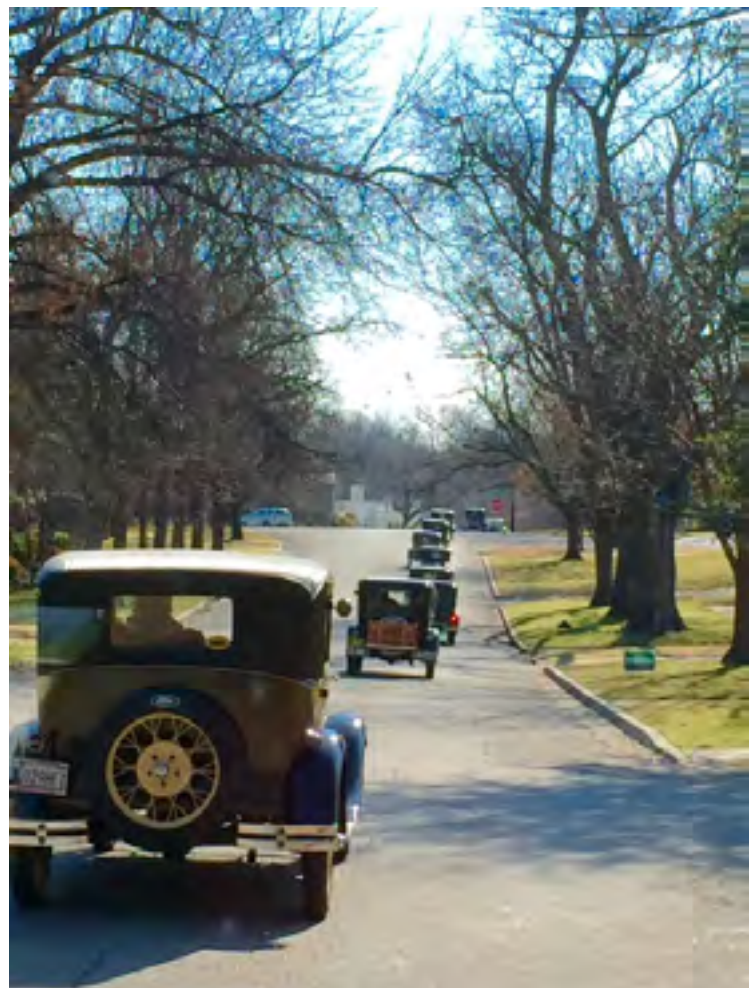
The model A is simple to get running and it does not take a rocket scientist to do it!

Please share your thoughts with us.

Also remember our breakfast next month is on the second Saturday, the 12th, at Maxwell's and then on to the Circle for a silent movie showing.

We will provide baked potatoes at our next meeting. All you have to do is bring your favorite topping!

Jerry



NUTS & BOLTS

(OR MISCELLANEOUS TIDBITS)

by Ken Brust



The February breakfast at Reasor's was very nice. They really rolled out the red carpet for us. The poker run afterwards had 4 interesting stops. A perfect drive for 13 Model As plus Ralph and Connie in their AA, and the weather was just about perfect. It was fun having Susan join us also. She knows more about Model A maintenance than I will ever know. We snaked through the heart of Tulsa for almost 20 miles and ended up within 3-4 miles of our starting point!

Remember, it's the journey, not the destination! Congrats to Donna and Rich for the winning poker hand! They just squeaked by Tory with their higher straight! DuValls blew a head gasket but managed to trailer it back to Tahlaqua okay and were fixed the next day.

Carolyn finds it hard to believe she will be 100 next year! Our meeting last year was on her birthday, which is St. Pat's Day, so it worked out nicely for a birthday celebration! Even tho her birthday is not on our meeting night this March, why don't we each bring her a funny 99th birthday card to our March meeting? Happy 99th Birthday, Carolyn!

Many of you have met our Iowa farmer friends who have visited down here from time to time. They are now the proud owner of a completely restored 1929 fordor. They are bringing it down this May for Marvin to install an a/c. The Model A BUG bites again!!

Ted presented a new year's treat to members of the Tuesday morning coffee club by giving each a McDonalds gift card for our weekly pick-me-up-and-get-me-started! Thanks, Ted. The good news mentioned at coffee is that Rodger is now on his way to regaining his FAA flight medical certificate after all his woes concerning his heart's electrical system. Congrats, Rodger!

Some of the guys drove up to Wichita recently to inspect lots of old, rusty parts and whatever else they could find. Charlie brought home some LED tail lights to install on his A. Marvin always seems to find things he needs. Bob and Margaret are still waiting for their motor to be rebuilt. With the nice weather we have been enjoying, it almost seems like a sin not to be out driving our Model As.

Happy trails to you!



FYI RELATED

March 17-18, 2016

Chickasha Pre-War Swap Meet

May 11-14

Chickasha Spring Swap Meet

June 9-12

2016 Texas Tour

June 19-24, 2016

National MAFCA Convention,
Loveland, CO

June 5-9, 2017

Omaha Regional Meet, Omaha, NE

44TH ANNUAL TULSA

SWAP MEET,

APRIL 22 & 23, 2016

by Jerry Sloan

Location: Creek County

Fairgrounds at Highway 33 &
Route 66.

>Approximately 5 miles west of Sapulpa, Oklahoma in Creek County on Route 66. From the Turner Turnpike (I-44) take Exit 211 at Kellyville/Drumright Turn East on Highway 33, then right on Route 66, go ¼ mile and you're there.



a welcome party, fashion judging, car judging, men & women seminars, self-guided & grand tours, bunco dinner, and award banquet. The registration form and itinerary can be found at www.texasmafc.com. Or let me know and I will get you a copy.

Marvin Mellage

LETTER FROM THE TEXAS TOUR CHAIRMAN

The 53rd Annual Texas Tour is going to be held in Glen Rose, Tx June 9-12, 2016. We have spent almost two years preparing for this event and we cannot wait for you and your club members to attend! In registration form you will notice that it is just \$75 a person (children 17 & under free) to attend. This is an all inclusive price for all the activities of the tour. You will also notice on the form is the hotel information with very competitive pricing. I urge that if your club members have not made their reservations, they do so soon as the hotels are filling up. Also included in the form is a brief description of the events that will be taking place at the tour.

I ask that you please respond and let me know that you received this email and have forwarded it to your editors. You can also find the form online electronically at www.texasmafc.com. Please let me know if you have any questions!

Jordan Douglass, 2016 Texas Tour Chairman

TULSA
BRAKE AND CLUTCH SUPPLY CO., INC.
Large and Small - We do 'em all!

INDUSTRIAL
COMMERCIAL
AGRICULTURE
CRANES • TRUCKS
NEW OWNERS

AND NATIONAL
DRUMS
SHOES
PARTS
SEALS & BEARINGS
FLYWHEELS

CLUTCH DISC
CLUTCH SHIMS
CLUTCHES
FRONT SPOCKETS

TRACTORS • AUTOS
FLYWHEELS, DISC & DRUM TURNING

Jerry Springer
1335 E. 11th - Tulsa, OK 74120
Phone 918-582-2165
Fax 918-582-4807
Toll Free 877-582-0771

1-800-288-3601
FAX 834-3866

918-834-3601

Lester's
Gear & Automatic Parts
Specialist From Flywheel
Thru Differential

Standard / Automatic

129 N. Lewis
Tulsa, OK 74110

2015 OFFICERS & BOARD MEMBERS

President.....	Jerry Conrad	918.606.7450	jerryconrad@sbcglobal.net
V President.....	Tory Brust	918.728.1800	torybrust@gmail.com
Co-Secretary.....	Chris DuVall	918.816.0839	chrisduvall@gmail.com
Co-Secretary.....	Melody DuVall	918.458.7111	duvallstrans@att.net
Treasurer.....	Linda Ochs	918.688.3707	hotdog263@cox.net
Director.....	Linda Mellage	918.629.2978	lindamellage@cox.net
Director.....	Donna Robinson	918.698.6281	rdonna45@gmail.com

COMMITTEE CHAIRPERSON

1000 Mile Club.....	Roy Cail	918.906.0575	roycail@cox.net
Advertising, Membership & Name Tags	Linda Ochs	918.688.3707	hotdog263@cox.net
Calling Committee.....	Connie Hudson	918.269.7240	conniehudson@cox.net
Web Site, Club Directory.....	Steve Reiser	918.455.6512	steveraiser@hotmail.com
Newsletter Coordination.....	Harold Helton	918.230.4906	hahelton@cox.net
Publisher.....	Chuck Ramsey	918.629.4258	cramsey2gofree@cox.net
New Members.....	Jerry Conrad	918-606.7450	jerryconrad@sbcglobal.net
Photography.....	Barbara Cail	918.299.5691	barbcail@cox.net
	Lesajensen	405.200.5904	lesajensen@gmail.com
Programs & Entertainment	OPEN - Board with assistance from the membership		
Refreshments.....	Don Reed	918.361/6164	donreed@windstream.net
Clothing.....	Kent Washburn	918.693.8504	klwashburn@cox.net
Sunshine Person.....	Lesajensen	405.200.5904	lesajensen@gmail.com
Tours, Activities & Events..	Board with assistance from the membership		
Supplies.....	Linda Mellage	918.451.9179	lindamellage@cox.net
Cookies.....	Donna Robinson	918.698.6281	rdonna45@gmail.com
Calling Committee:	Melody DuVall 918.458.7111	Lisa Ramsey 918.371.0626	
Members:	Carolyn Hays, Virginia Harris, Donna Robinson, Margaret Soper, Alternate: Jessie Reed		

The World's Largest Selection of 1909-31 Ford Parts

Snyder's

ANTIQUE AUTO PARTS

12925 Woodworth Rd. • New Springfield, OH 44443

Toll Free Ordering (888) 262-5712

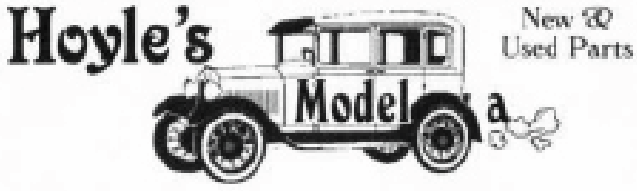
or FAX (888) 262-5713

Order On-Line @ www.snydersantiqueauto.com

FREE Fully Illustrated CATALOG
\$10.00 outside the U.S., Canada, & Mexico

Calendar of Events

DATE.....	EVENT AND LOCATION.....	TIME
March 9.....	Ladies Luncheon, Pink House Two, 209 North Main Street, Owasso, OK	11:30 a
March 12.....	Breakfast at Maxwell's, 2636 East 11th, Tour and silent movie, Circle Cinema	9:00 a
March 15.....	Business meeting - Hardesty Library, 8316 East 91 Street, Tulsa.....	7:00 p
baked potatoes - members should bring toppings		
April 2.....	Breakfast.....	TBA
April 8, 9, 10.....	Model-A 2016 Spring Tour, Guthrie	
April 19.....	Business meeting - Hardesty Library, 8316 East 91 Street, Tulsa.....	7:00 p
April 22, 23.....	Swap Meet, Creek County Fairgrounds at Highway 33 & Route 66.	
May 7.....	Breakfast.....	TBA
May 19.....	Business meeting - Hardesty Library, 8316 East 91 Street, Tulsa.....	7:00 p
June 4.....	Breakfast.....	TBA
June 21.....	Business meeting - Hardesty Library, 8316 East 91 Street, Tulsa.....	7:00 p
July 9.....	Breakfast.....	TBA
July 19.....	Business meeting - Hardesty Library, 8316 East 91 Street, Tulsa.....	7:00 p
August 6.....	Breakfast.....	TBA
August 16.....	Business meeting - Hardesty Library, 8316 East 91 Street, Tulsa.....	7:00 p
September 10.....	Breakfast.....	TBA
September 20.....	Business meeting - Hardesty Library, 8316 East 91 Street, Tulsa.....	7:00 p
October 1.....	Breakfast.....	TBA
October 19.....	Business meeting - Hardesty Library, 8316 East 91 Street, Tulsa.....	7:00 p
November 5.....	Breakfast.....	TBA
November 15.....	Business meeting - Hardesty Library, 8316 East 91 Street, Tulsa.....	7:00 p



Hoyle's New & Used Parts
Model A

Sheryl & Greg Hoyle
622 SE 1st Street Minco, OK 73059 Cell 405-830-7752 Hm 405-352-4184
greghoyle@sbcglobal.net




March - Ken Brust
Melody Duvall

April - Donna Robinson
Edna Pogue

May - Linda Ochs
Sharon Lairmore

June - Charlie Clevenger
Jan Hamm



"COTTON PICKIN ENGINES"
Ron Duke
Engine Rebuilding
918-636-2787
918-341-9413



CLUB JACKETS, HATS AND MORE
If you are interested in purchasing clothing items with the Club Logo, contact Kent Washburn 918-693-8504 or klwashburn@cox.net

NEW MEMBER

**Sewell, Tom and
Charlie, Jr.
4809 So. 101 E. Ave.
Tulsa, OK 74146**

**work phone
918-665-2641**

1931 Huckster

2016 1000 MILE PROGRAM

by Roy Cail

The Board has approved the 2016 1000 Mile Club program. I am in the process of setting up the data base for 2016 and need your assistance. If you want to participate this year please contact me at roycail@cox.net. If you participated and submitted final odometer readings in December 2015 I do not need your reading(s), just advise as to your intent to participate. However, if you did not participate in 2015 please send you odometer reading(s) to me. I have already received two members (Jim and Edna Pogue's and Chuck and Lisa Ramsey's) for 2016.

We had a very good 2015 and we can make 2016 even better --- get those A's on the road.

MODEL-A CLUB 2016 SPRING TOUR

Planning for our Model-A Spring Tour April 8-9-10, 2016 in Guthrie, OK is well under way. Hopefully, you are making plans to attend and have reserved a room. The hotel is the LaQuinta Inn, 406 Heather Road, Guthrie OK (405) 293-6000. A block of rooms is being held until March 19, for \$99.00 + tax. Mention the Model-A Club when calling.

Tentative schedule is as follows:

Friday April 8 – Breakfast at Café USA in Sapulpa (optional)

- 9:30 AM Depart Café USA for Guthrie on scenic Hwy 33 (approx. 70 miles)
- Lunch on your own
- Afternoon self-guided adventures
- Dinner at a Guthrie Mexican restaurant
- Door prize drawings and games

Saturday April 9- Breakfast at the hotel

- Entertainment at the Lazy-E Ranch
- Lunch on your own
- Afternoon self-guided downtown Guthrie trolley rides, museums, points of interest, antique shopping, sightseeing.
- Dinner at a unique Guthrie home cooking style restaurant
- Door prize drawings and games

Sunday April 10 - Breakfast at the hotel

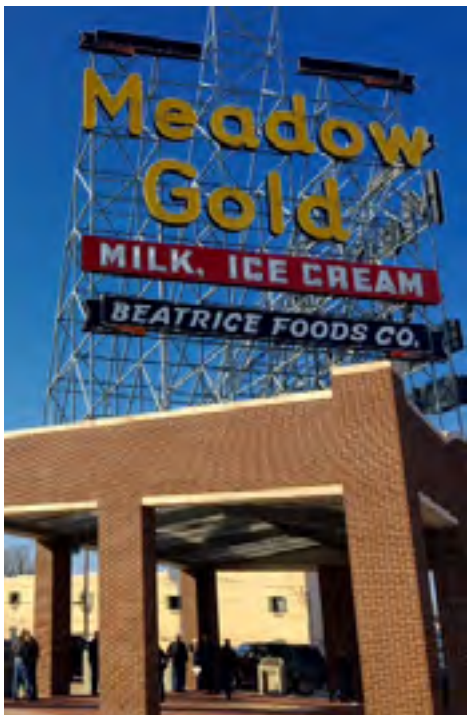
- Depart hotel for home on historic Route-66 Hwy (approx. 105 miles to Sapulpa)
- Stops at POP'S Place and the Round Barn
- Lunch at the Car's movie fame Rock Café in Stroud
- Home

An itinerary will be handed out at the hotel showing dates, times, locations, and directions. We are looking forward to seeing you at the Model-A Club Spring Tour in Guthrie, OK.

Please contact any of the following tour organizer's if you have questions. Thanks.

Donna Robinson	918-698-6281
Rich Robinson	918-695-7741
Linda Mellage	918-629-2978
Marvin Mellage	918-633-4875

**February Breakfast
at Reasor's
Cookhouse. . .
then on to the
Poker Run**





February Monthly Meeting

Mitch and Chris Duvall presented a slide show on their driving trip in a Model A.

They drove on a tour leaving Reno and visited Jackson Hole, Yellowstone, Tahoe, Snake River areas and Teton Mountains among other stops on their over-three thousand mile drive.



MEMBERS BIRTHDAYS
& ANNIVERSARIES

MARCH

- 2 Ed Foust
- 5 Fred C. LeMaster
- 12 Sheryl Hoyle
- 14 Faith Bond
- 15 Mitch DeCamp
- 15 Raenalle DeGidio
- 16 Janet Duke
- 16 Shirley Nicholson
- 17 Carolyn Plucknett
- 20 Robert Bullard
- 22 David Hayes
- 22 Randi Wightman
- 25 Ron Pogue
- 29 Scott Case



We've Revolutionized the way you find Model A Parts!

YOUR MOST RELIABLE SUPPLIER OF QUALITY PARTS FOR OVER 20 YEARS!

FOUR CATALOGS TO CHOOSE FROM:

• Coupe • Pickup • Open Car • Sedan

CALL & ORDER YOUR FREE CATALOG TODAY

1-888-879-6453

www.mikes-afordable.com

1606 BACK ACRE CIRCLE
MOUNT AIRY, MD 21771



TOLL FREE
Order # 800 255-1929
Fax # 800 774-1930
(U.S. and Canada Only)

Information #: (301)829-9880
Overseas fax #: (301)829-9881

- ~ Our catalog contains over 3,900 Model A parts, each with a FULL description and illustration.
- ~ Many full page schematic drawings to help identify parts and assembly sequence.
- ~ Supplying quality by using over 90% U.S. made parts.
- ~ Serving the Model A restorer with quality parts since 1977.

Send for a FREE 194 page illustrated Model A catalog

WEB: www.brattons.com



SUNSHINE REPORT

If you or your family have health issues, please call Lesa Jensen, 405-200-5904 or lesajensen@gmail.com

Detail Tool & Machine



Wire EDM Specialist
Tooling & Job Shop Work
Conventional and CNC Machining

Dave Pilmaier
detailtool@fairpoint.net

(918) 697-2589 cell
(918) 476-9476 fax

Axles
AT Transmissions
& Transfers Inc.



SPECIALISTS ON
TRUCK TRANSMISSIONS AND DIFFERENTIALS
RICHARD BOERSTLER

Toll Free: 1-877-495-7725

3244 N. LEWIS
TULSA, OK 74110-1534

BUS. (918) 425-7725
FAX (918) 425-7740

Tech Talk



Bendix Starter Drive

Provided by Ken Brust from Sooner A



In 1910, Vincent Bendix invented and patented the Eclipse Bendix starter drive for the purpose of engaging an electric motor to start a gas engine. His timing and design couldn't have been better. Until that time, starting the motorcar was by hand crank.

The 1914 Chevrolet, "Baby Grand" was the first production car to use the Bendix Starter Drive, and it was shortly adapted to all American produced cars and dominated the market for many decades. It was so successful that the name Bendix (Eclipse prefix was seldom referred to) became generic for starter drives in general. Bendix went on to build over seventy million drives.

When the Model A was introduced in 1928, Henry Ford equipped his cars with the competitive Abell starter drive. By, Oct 28 the Abell type drive was obsolete and production was switched to 100% Bendix. Dealers could get the Bendix replacement for an exchange price of \$3.00. They were to sell it to owners for an exchange price of \$4.50, never admitting the deficiency of the Abell unit but told the customer that the Bendix drive would give them smoother and quieter operation. Although the service bulletins say that the switch to the Bendix drives was in October 28, I think that it was probably much earlier. The company was probably slow to admit that the Abell drive was a mistake. I've been going to swap meets since 1965 and I've never seen an Abell starter drive. Since almost

500,000 cars had been manufactured by Oct. 28 one would expect to occasionally see one. Or, maybe there was a 100% failure rate.

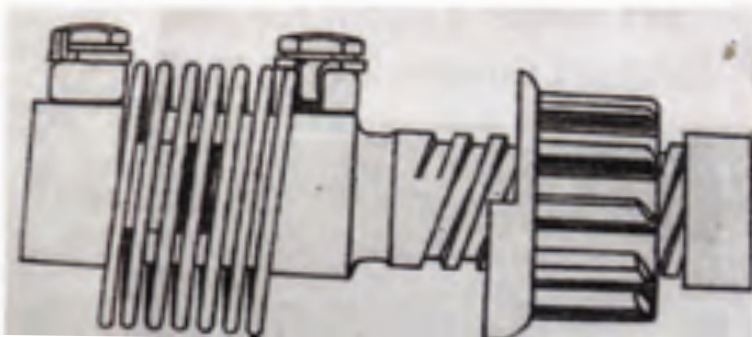
Word to the wise: Many Bendix drives resembled the ones used by Ford, but other makes that engaged the starter on the other side of the car had a spring that was wound opposite of the Ford spring. Thousands of these springs were on the market as it was an often needed replacement. One of our members, not knowing any difference, installed the wrong spring on his Model A. When he pushed the starter, the spring unwound and made quite a commotion in the starter cavity. RG

Bendix Drive Springs



Model A Spring

Non Model A Spring (on the right) If you have one of these in your spare parts stock you may want to throw it away or at least paint it red.



ABOUT THE TULSA MODEL A FORD CLUB CHAPTER #8231 OF THE MODEL A CLUB OF AMERICA (MAFCA)

This is the official publication of the Tulsa Chapter of Model A Ford Club of America. This monthly newsletter is mailed to members, prospective members, advertisers and editors of similar publications. It's purpose is to keep you informed of what has taken place, scheduled activities and to promote fellowship among club members.

Members are encouraged to submit articles containing technical or any club related information. Articles must reach the editor by the 5th of the month to insure publication in that month's newsletter. Articles received after that will appear in a following newsletter.

Membership dues for the Tulsa Model A Ford Club are \$20 per family annually payable at the end of the year. Contact the New Member chairperson for new memberships and the Treasurer for renewals. The Tulsa Model A Ford Club recommends membership in the national MAFCA organization.

Members may advertise at no cost, non-business ads in the newsletter For Sale, Wanted or Trade section. Businesses may advertise with cost by the ad size, (business card size or 1/4 page) in the advertising section. The number of ads are restricted to space available in the Rumble Sheet. Contact the Advertising chairperson for details.

MEETING SCHEDULE

- Business Meeting - 7:00 p.m. 3rd Tuesday of each month at Hardesty Library, 8316 East 93 Street, Tulsa
- Breakfast - 9:00 a.m., 1st Saturday of each month, location to be announced
- Board Meeting - 7:00 p.m., 1st Tuesday of each month, Charles Hardesty Library, 8316 East 93rd Street, Tulsa

TO SUBMIT AN ARTICLE, LETTER, OR FOR SALE OR TRADE, EMAIL:

Harold Helton - hahelton@cox.net

THE RUMBLE SHEET

Tulsa Model A Ford Club
P. O. BOX 33348
Tulsa, OK 74153-3348

