



THE RUMBLE SHEET

MARCH 2021 - VOLUME 55 - ISSUE 3

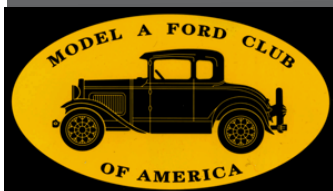
PRESIDENT'S MESSAGE

INSIDE THIS ISSUE

- 1 President's Message
- 2 Finer Points
- 3 Nuts & Bolts
- 4 Officers, Board Members, Committees
- 5 Calendar, Finer Points continued
- 6 Birthdays, Sunshine Report, Club Apparel, FYI
- 7 Letter from Robert Bullard
- 8 Sweetheart Cruise Pix
- 9 Sweetheart Cruise Pix
- 10 About the Model A Club

Joan Crawford
photo on page 5 provided
by MAFCA

visit us on the web at
www.tulsamodela-fordclub.com



After a beautiful snowfall and winter weather, we were able to reschedule the Valentine's Poker Run to last Saturday, February the 27th. A little late, but those who participated enjoyed a beautiful sunny day with lots of chocolates, trivia, and gifts for the ladies. You

can never go wrong with a Model A cruise and chocolate combination! Ollie did a great job planning the perfect route.

Thank you, Connie and Ralph Hudson for picking up the slack and working on a Spring Tour for the group for April. We are super excited for the group to participate in a short tour. As soon as we have more details, we will send the information out via e-mail, Facebook, and in the newsletter. Details coming soon!

Unfortunately the Hardesty Library is still operating on a curb-side basis only, so our next meeting will be via Zoom. Please join us as we discuss future tours, and it's always nice to see a familiar face! We are planning a Lake Tour for March 20th so tune in for the details! We will hopefully restart the monthly breakfast meetings in April as we feel that almost everyone should have received their COVID shots by then.

Cruising along,
Mitchell



THE FINER POINTS

By Chris DuVall

Believe it or not, there are no fewer than three types of judging in the national MARC club: blue ribbon, touring, and fine point. Hopefully soon we will all be able to meet again in person, and we can all discuss the differences together. With three categories, it seems like there is a category for everyone!

Recently, I've been studying original valve stems a lot. I seem to thrive on details, and with eight variations of valve stems for Schrader alone, it seems I have lots of details to absorb. Of course, there were other makers of valve stems for Ford (Dill, Firestone, Bridgeport, and Acme), but it seems Schrader is the most commonly used. It is interesting how the different judging classes build on each other, and in the case of valve stems this is no different. Blue ribbon judging merely states that you must have metal tire hardware. Touring class stipulates that the metal valve stems must be correct for your year. Fine Point is much more specific: the stems must be correct for the month and year your car was assembled. All valve stem hardware was plated with unpolished nickel. Below is a photo of a very rare stem I have that was only used for VE28 (very early 1928 – in other words, October – December 1927). It is a Schrader 888.



Additionally, below is a photo of a perhaps equally rare early valve stem that was only used in January and February of 1930. This is a Schrader 6300 TR-83 without knurling. Once restored, wouldn't it be perfect for my February 1930 Roadster? I just need to find four more! Ha!



Original valve stems can be difficult to find, and quite costly once found. However, A&L reproduces some of the most common stems for use on our cars, and they are nearly perfect. In fact if they are correct for your car, I don't think the fine point judges can even tell. A&L reproduces the Schrader 6300 TR-80 (Second half 1929), Schrader TR-83 6700 (May 1930 – EOP), and Schrader TR-83A (July 1931 – EOP).

Recently, I purchased an original unrestored car, and it came with a complete set of original valve stems with patina to match the car. Below is a photo of one of those stems. It is a Schrader 6300 with lettering wrapping around the stem originally used starting in mid-1928 through mid-1929.





NUTS AND BOLTS

by Ken Brust

Covid has certainly made streaming TV popular. We've watched our share lately catching up on both old shows and new ones. Several have had lots of vintage cars which is always fun. We recently watched Fargo starring William Macy as the car salesman and then the next day read an article in the paper about him. He has a 1929 Model A that he says looks brand new that he drives frequently. Jerry Conrad continues to feed me old issues of The Restorer which always contain interesting articles. One showed Don Knotts and Andy Griffith with Andy's '30 Cabriolet. Andy also had a '31 A-400 and a '28 Phaeton. Don died in 2006 and Andy in 2012. I'm sure lots of Hollywood types, like Mr. Macy, have enjoyed Model As over the years and some probably still do!



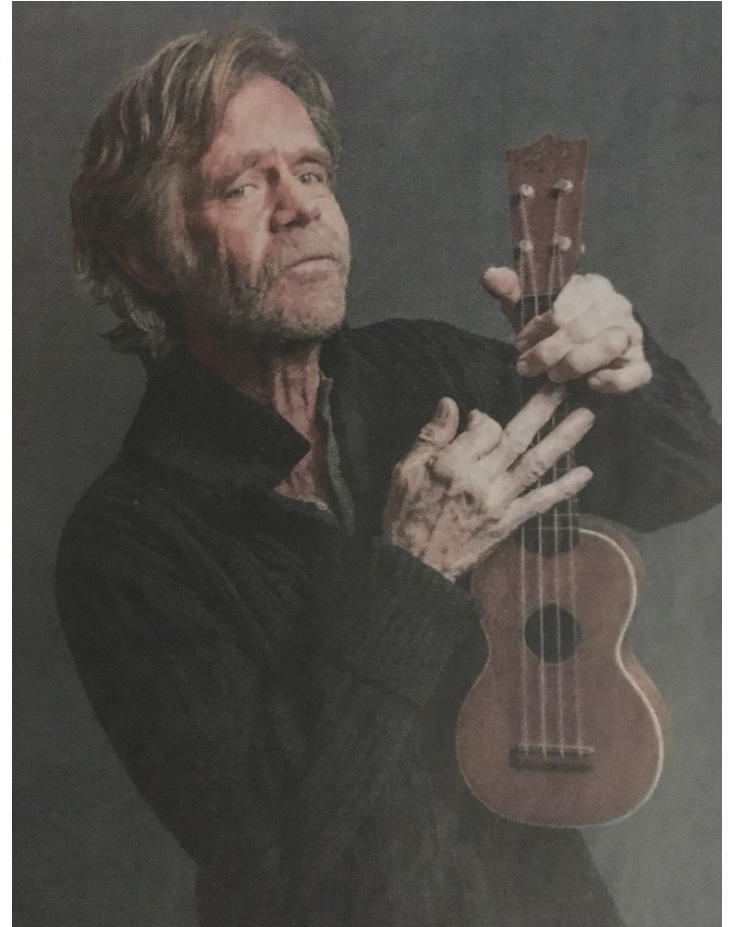
Here is a photo to test your Model A expertise! What make is this? Have you ever seen anything like this? Actually, it is a '29 Town Car that was modified by the dealer during the depression since no one was buying chauffeur-driven cars. The open front seat was covered by extending the car's roof even further forward to create a strange looking sun visor. I bet this is a show-stopper at car shows!!



In the May-June '73 issue of The Restorer is a blurb announcing the Tulsa Chapter is planning its first annual tour. It states the club has 80 members. Following the two-day tour, a banquet was planned and trophies were to be awarded. Anyone remember going on this tour??

In a different car magazine I read an article by one of my favorite car guys, Jay Leno, and thought of Chris DuVall and his article last month on the Ford oval emblem. Jay recently acquired a 1921 Wills Saint Claire. Few know much about the car or its designer but Childe Harold Wills originally worked for Henry Ford as an engineer and metallurgist. He helped develop vanadium steel used in the chassis of the Model T. He along with Ford became extremely rich and Wills eventually left to try his own venture. But Jay reports that Wills is the one who designed the original blue-oval Ford logo. Did you know this, Chris? But, of course, you did!

Our own, Robert Bullard, who now serves on the MAFCA Board, recently sent a letter to all. Check it out in this issue. We hope we'll be able to get out and tour together soon now that the snow has come and gone and the vaccines are being administered! Happy Trails.



2021 OFFICERS & BOARD MEMBERS

President Mitchell DuVall.....	duvallstrans@att.net.....	918-458-1469
Vice President Ollie Harris	ollied@cox.net	918-986-0036
Secretary Connie Hudson	chudson58@cox.net	918.269.7240
Treasurer Jeanne Washburn	jeannewashburn@cox.net.....	918.693.2912
Director Chris DuVall	chrisdduvall@gmail.com	918.816.0839

COMMITTEE CHAIRPERSONS

Advertising.....	Vacant	
Clothing.....	Kent Washburn.....	klwashburn@cox.net..... 918 693-8504
Club Directory	Steve Reiser	stevereiser@hotmail.com..... 918 851-8634
Cookies	Linda Mellage	lindamellage@cox.net..... 918.629-2978
Membership		
Mileage Awards.....	Roy Cail	roycail@cox.net
Name Tags.....	Linda Ochs	hotdog263@cox.net
Newsletter Coordinator....	Harold Helton.....	hahelton@cox.net
Photography	Barbara Cail	barbcail@cox.net
Programs	Board with membership assistance	
Refreshments & drinks	Cheryl & Bobby Jackson	bjackson4@sbcglobal.net
Sunshine Person	Connie Hudson.....	chudson58@earthlink.net
Supplies.....	Marvin & Linda Mellage	lindamellage@cox.net..... 918 629-2978
Tours	Board of Directors with membership assistance	
Web Site	Steve Reiser	stevereiser@hotmail.com..... 918 851-8634

We've Revolutionized the way you find Model A Parts!



FOUR CATALOGS TO CHOOSE FROM:

• Coupe • Pickup • Open Car • Sedan

CALL & ORDER YOUR FREE CATALOG TODAY

1-888-879-6453

www.mikes-afordable.com





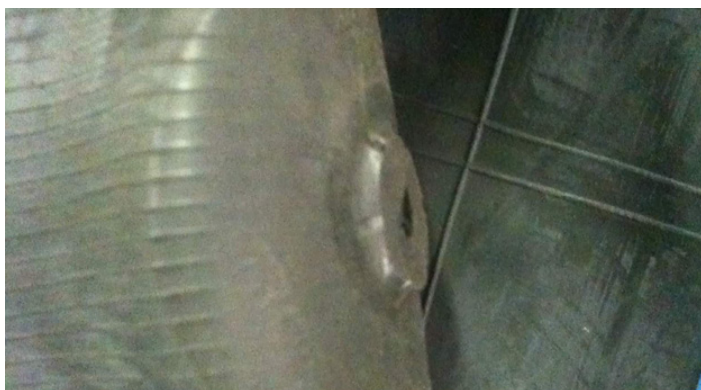


Calendar of Events

DATE	EVENT AND LOCATION	TIME
March 9	Ladies' Lunch, El Patron Mexican, 11101 East 41st, Tulsa	11:30 a
March 16	Zoom Meeting	7:00 p
March 20	Lake Tour, Leave from Wagoner	10:00 a
April	Spring Tour - details to follow	

FINER POINTS *continued from page 2*

In keeping my latest car completely original, I decided to begin the process of installing the stems. It's a relatively simple process although it can be a bit nerve-racking if you've never done it before. You start by very carefully cutting the rubber valve stem off a new tube. Then, you sand the spot smooth until it looks like the below photo. Once it is smooth, you can use snap ring pliers to spread apart the hole to insert the bottom edge of the stem.

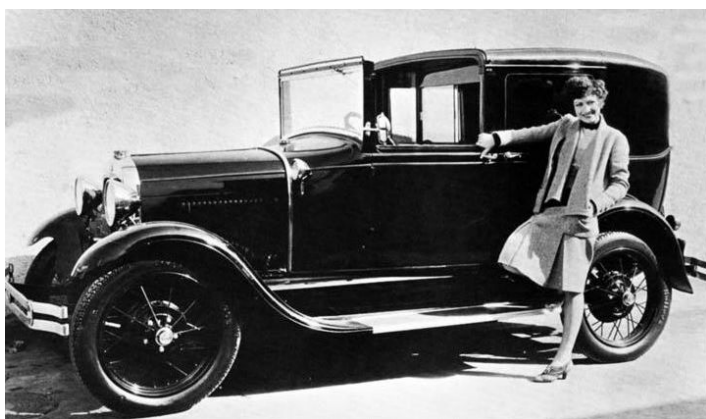


Once the stem is inserted, install the bridge washer and hex nut being careful not to over tighten. Now you should be able to put some air into the tube. It's best to leave them for a long while to ensure you don't have a slow leak. Once you are sure you do not have any leaks, you should be good to install the tube in the tire. Make sure your tire is correctly painted. You wouldn't want to go to all of this



trouble, and something still be incorrect, right? Ha! Below is a photo of my installed stem. I have yet to install it because I have not had time to paint my new tires. It is a thing of beauty!

Even if you are unable to find original valve stem hardware, I would still encourage you to use the A&L reproductions. They are not overly expensive, and they really add a touch of class to the tires and wheels on our cars not to mention giving us the original look! I'll leave you with a period advertisement that expresses just how inexpensive the Schrader equipment is.




Actress Joan Crawford standing next to her Ford Town Car circa 1929.

ERIC WENINGER
OWNER

2045 S BEDFORD ST
WICHITA, KS 67207

316-619-1821 CELL
316-685-2553 SHOP

www.modelmedic.com
modelmedicllc@sbcglobal.net

THE MODEL A MEDIC LLC 

STOCKING A FULL LINE OF NEW AND USED MODEL A FORD PARTS

SPECIALIZING IN FULL SERVICE REPAIRS, ENGINE, DRIVE TRAIN, AND RESTORATION

MEMBERS' BIRTHDAYS

MARCH

12	Sheryl Hoyle
14	Faith Bond
14	Robert Stine
20	Robert Bullard
22	David Hayes
24	Bill Harris
29	Scott Case



CLUB JACKETS, HATS AND MORE

If you are interested in purchasing clothing items with the Club Logo, contact Kent Washburn 918-693-8504 or klwashburn@cox.net



SUNSHINE REPORT

Call Connie Hudson with concerns at 918 269-7240



March 12-13 Sunflower Swap Meet Wichita, KS

March 18-21 Norman Swap Meet Cleveland Co Fairgrounds Norman, OK

March 19-20. Chickasha Pre-War Swap Meet Chickasha, OK

Detail Tool & Machine



Wire EDM Specialist

Tooling & Job Shop Work

Conventional and CNC Machining

Dave Pilmaier

(918) 697-2589 cell

detailtool@fairpoint.net

(918) 476-9476 fax

Saint Patrick's Day, feast day (March 17) of St. Patrick, patron saint of Ireland. Born in Roman Britain in the late 4th century, he was kidnapped at the age of 16 and taken to Ireland as a slave. He escaped but returned about 432 to convert the Irish to Christianity. By the time of his death on March 17, 461, he had established monasteries, churches, and schools. Many legends grew up around him—for example, that he drove the snakes out of Ireland and used the shamrock to explain the Trinity. Ireland came to celebrate his day with religious services and feasts.

The World's Largest Selection of 1909-31 Ford Parts

Snyder's

ANTIQUA AUTO PARTS

12925 Woodworth Rd. • New Springfield, OH 44443

Toll Free Ordering (888) 262-5712

or FAX (888) 262-5713

Order On-Line @ www.snydersantiqueauto.com



FREE Fully Illustrated CATALOG

\$10.00 outside the U.S., Canada, & Mexico





Model A Ford Club of America



250 SO. CYPRESS • LA HABRA, CALIFORNIA 90631-5586
562/697-2712 • 562/697-2737 • FAX 562/690-7452

*From the desk of 2021 Chapter Coordinator
Robert Bullard*

To all the MAFCA Chapter Coordinators, Newsletter Editors and Local Chapter volunteers, I would like wish everyone a great start to 2021. I have a feeling it won't be easy and we very well could look back and think 2020 was a piece of cake compared to the unknowns we face for 2021. As the face of our local MAFCA chapters, I want to thank you for keeping our hobby front and centered with our many members. Every chapter of every car club I come in contact with is facing the same challenges of keeping our clubs active, the membership vibrant and our membership informed and active.

This is my inaugural article and I look forward to not only conversing with you this year but also getting to know you personally. Information is knowledge and keeping the information flowing will allow our membership to make the best and most informed decisions for the local chapters.

With all the activities that have been canceled or delayed the MAFCA Board is pleased to inform the membership that the National Tour scheduled for June is still scheduled and a second hotel was recently added to the available accommodations. All systems are still on go for a great tour and I for one can't wait. New Hampshire is one of only four states I've never visited and one of the few states I've yet to drive my Model A. What a "bucket list" trip this will be for me and my wife. Make your plans now. You don't want to miss this one!

"Paying it Forward" - Robert Bullard



Sweetheart Cruise



Sweetheart Cruise



ABOUT THE TULSA MODEL A FORD CLUB

CHAPTER #8231 OF THE MODEL A CLUB OF AMERICA (MAFCA)

This is the official publication of the Tulsa Chapter of Model A Ford Club of America. This monthly newsletter is mailed to members, prospective members, advertisers and editors of similar publications. Its purpose is to keep you informed of what has taken place, scheduled activities and to promote fellowship among club members.

Members are encouraged to submit articles containing technical or any club related information. Articles must reach the editor by the 5th of the month to insure publication in that month's newsletter. Articles received after that will appear in a following newsletter.

Membership dues for the Tulsa Model A Ford Club are \$30 per family annually payable at the end of the year. Contact the New Member chairperson for new memberships and the Treasurer for renewals. The Tulsa Model A Ford Club recommends membership in the national MAFCA organization.

Members may advertise at no cost, non-business ads in the newsletter For Sale, Wanted or Trade section. Businesses may advertise with cost by the ad size, (business card size or 1/4 page) in the advertising section. The number of ads are restricted to space available in the Rumble Sheet. Contact the Advertising chairperson for details.

MEETING SCHEDULE

- Business Meeting - 7:00 p.m. 3rd Tuesday of each month at Charles Hardesty Library, 8316 East 93rd Street, Tulsa
- Breakfast - 8:30 a.m., 1st Saturday of each month, location to be announced
- Board Meeting - 7:00 p.m., 1st Tuesday of each month, Charles Hardesty Library, 8316 East 93rd Street, Tulsa

TO SUBMIT AN ARTICLE, LETTER, OR FOR SALE OR TRADE, EMAIL:

Harold Helton - hahelton@cox.net

THE RUMBLE SHEET

Tulsa Model A Ford Club
P.O. Box 33348
Tulsa, OK 74153-3348

